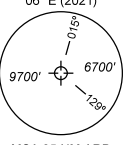
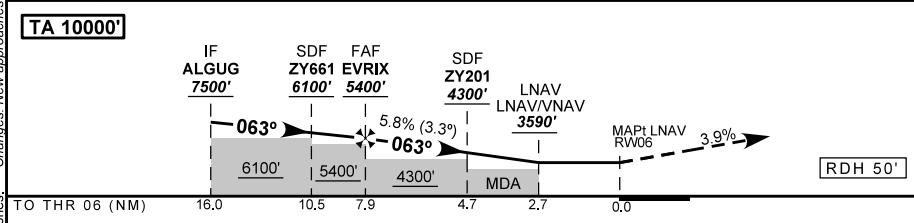
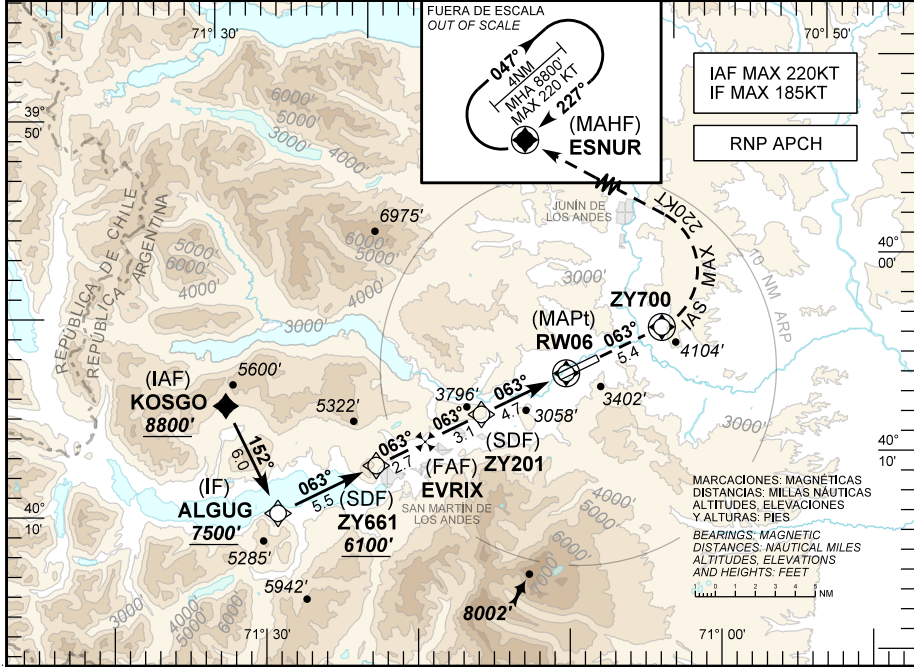


AVIADOR C. CAMPOS (SAZY)
SAN MARTÍN DE LOS ANDES

Carta de aproximación por instrumentos
Instrument approach chart

RNP X RWY 06

CHAPELCO TWR						
119.60 118.35						
RNP	FINAL APCH CRS 063°	ALTITUD MNM EVRIX 5400' (2811')	LNAV / VNAV DA(H) 3590' (1001')	AD Elev 2589'	THR Elev 2589'	06° E (2021)  MSA 25 NM ARP
Aproximación frustrada: ASC sobre curso 063° hasta ZY700, virar a la izquierda DCT ESNUR alcanzando MNM 7800 ft, HLDG ascendiendo hasta 8800 ft, y seguir instrucciones del ATC. Missed approach: Climb on course 063° to ZY700, turn left DCT ESNUR reaching MNM 7800 ft, hold climbing to 8800 ft, and proceed as directed by ATC.						
NOTA: Para sistemas Baro VNAV no compensados, debajo de -15°C o superior a 26°C N.A.				NOTE: For uncompensated Baro VNAV systems N.A. below -15°C or above 26°C.		



DIRECTA RWY 06 / Straight in RWY 06							Circulación Visual				
CAT	LNAV / VNAV			LNAV			Circle to land				
	DA 3590'	DH 1001'	MDA 3590'	MDH 1001'							
	VIS			VIS			CAT	MDA	MDH	VIS	
A	4500 M			4700 M			A	Circulación Visual N.A. Circle to land N.A.			
B											
C											
D											
GS KT	90	110	130	150	160	DIST to MAPt	7.9	6.0	5.0	4.0	2.7
FAF - MAPt 7.9 NM	5:15	4:18	3:38	3:09	2:57	ALT	5400	4740	4390	4040	3590
FPM	530	640	760	880	930	HGT	(2811)	(2151)	(1801)	(1451)	(1000)

10 AGOSTO 2023

Changes: New approaches.
 Cambios: Nuevas aproximaciones.

DISEÑO EANA S.E. - NAVEGACION AEREA ARGENTINA
 DIRECCION REGULACION NORMAS Y PROCEDIMIENTOS - DNINA

1/1 AVIADOR C. CAMPOS (SAZY) RNP X RWY 06

Seq Num	Fix Ident	Coordinates	Path Terminator	Fly Over	Distance (NM)	Course M°(T°)	Turn	Alt / Descr (ft/FL)	Speed Limit (Kt)	Navigation Specification	RNP
10	KOSGO	S 40°05'05.80" W 071°31'27.00"	IF	N	N/A	N/A	N/A	+8800	-220	RNP APCH	1.0
20	ALGUG	S 40°10'41.19" W 071°28'35.61"	TF	N	6.0	152 (158.6)	N/A	+7500	-185	RNP APCH	1.0
10	ALGUG	S 40°10'41.19" W 071°28'35.61"	IF	N	N/A	N/A	N/A	+7500	-185	RNP APCH	1.0
20	ZY661	S 40°08'40.54" W 071°21'55.78"	TF	N	5.5	063 (068.5)	N/A	+6100	N/A	RNP APCH	1.0
30	EVRIX	S 40°07'40.14" W 071°18'36.24"	TF	N	2.7	063 (068.5)	N/A	+5400	N/A	RNP APCH	1.0
40	ZY201	S 40°06'30.88" W 071°14'47.91"	TF	N	3.1	063 (068.4)	N/A	+4300	N/A	RNP APCH	0.3
50	RW06	S 40°04'46.00" W 071°09'03.21"	TF	Y	4.7	063 (068.4)	N/A	@2639	N/A	RNP APCH	0.3
60	ZY700	S 40°02'47.54" W 071°02'34.75"	CF	Y	5.4	063 (068.3)	N/A	N/A	N/A	RNP APCH	1.0
70	ESNUR	S 39°52'53.99" W 071°10'37.03"	DF	N	N/A	N/A	L	+7800	-220	RNP APCH	1.0
80	ESNUR	S 39°52'53.99" W 071°10'37.03"	HM	Y	4.0	227 (232.6)	R	+8800	-220	RNP APCH	1.0

10 AGOSTO 2023

AVIADOR C. CAMPOS (SAZY)
SAN MARTÍN DE LOS ANDES

Carta de aproximación por instrumentos
Instrument approach chart

VOR RWY 06

CHAPELCO TWR
119.60 118.35

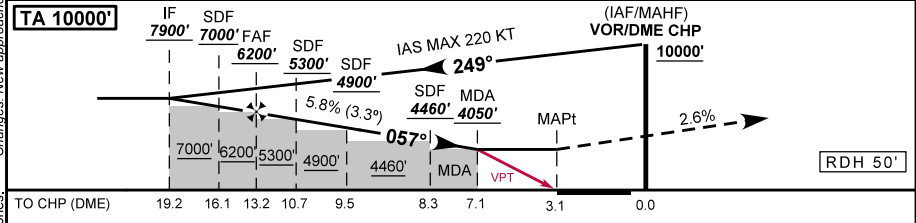
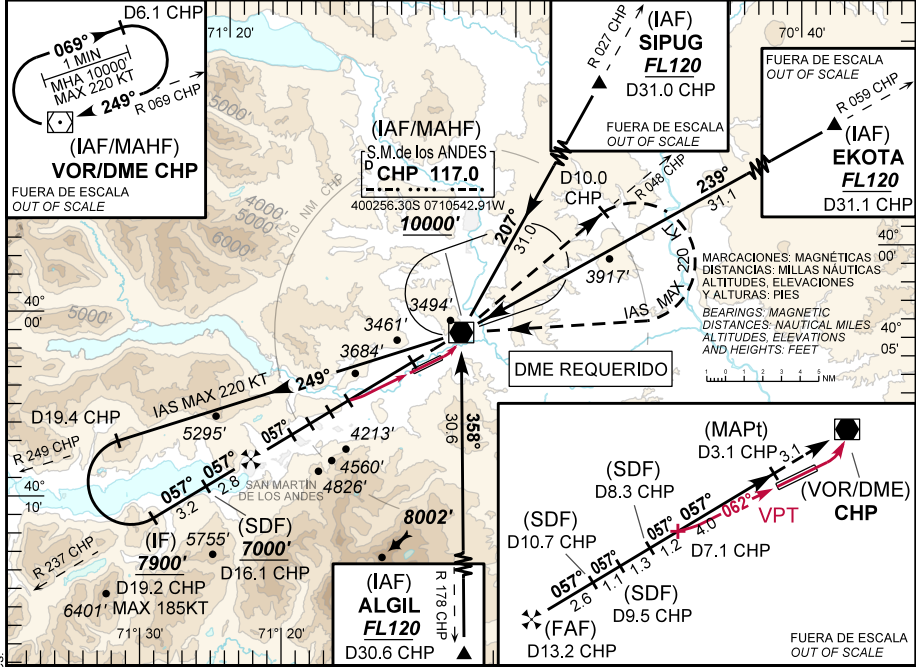
VOR CHP 117.0	FINAL APCH CRS 057°	ALTITUD MNM FAF 6200' (3611')	VOR/DME MDA (H) 4050' (1461')	AD Elev 2589'	THR Elev 2589'
-------------------------	-------------------------------	---	---	-------------------------	--------------------------

06° E (2021)

MSA 25 NM CHP

Aproximación frustrada: ASC sobre R 237 CHP hasta VOR CHP, virar a la izquierda R 048 CHP hasta D10.0 CHP, virar a la derecha DCT a VOR CHP alcanzando MNM 9300 ft, HLDG ascendiendo hasta 10000 ft y seguir instrucciones del ATC.
 Missed approach: *Climb on R 237 CHP to CHP VOR, turn left R 048 CHP to D10.0 CHP, turn right DCT to CHP VOR reaching MNM 9300 ft, hold climbing to 10000 ft and proceed as directed by ATC.*

NOTA: Maniobra visual con derrota prescrita (VPT), ver siguiente página. Autorizada únicamente para operaciones diurnas. Obstáculos en las proximidades del THR 06.
 NOTE: Visual manoeuvre with prescribed track (VPT), see next page. Authorized only for daylight operations. Obstacles in the vicinity to THR 06.

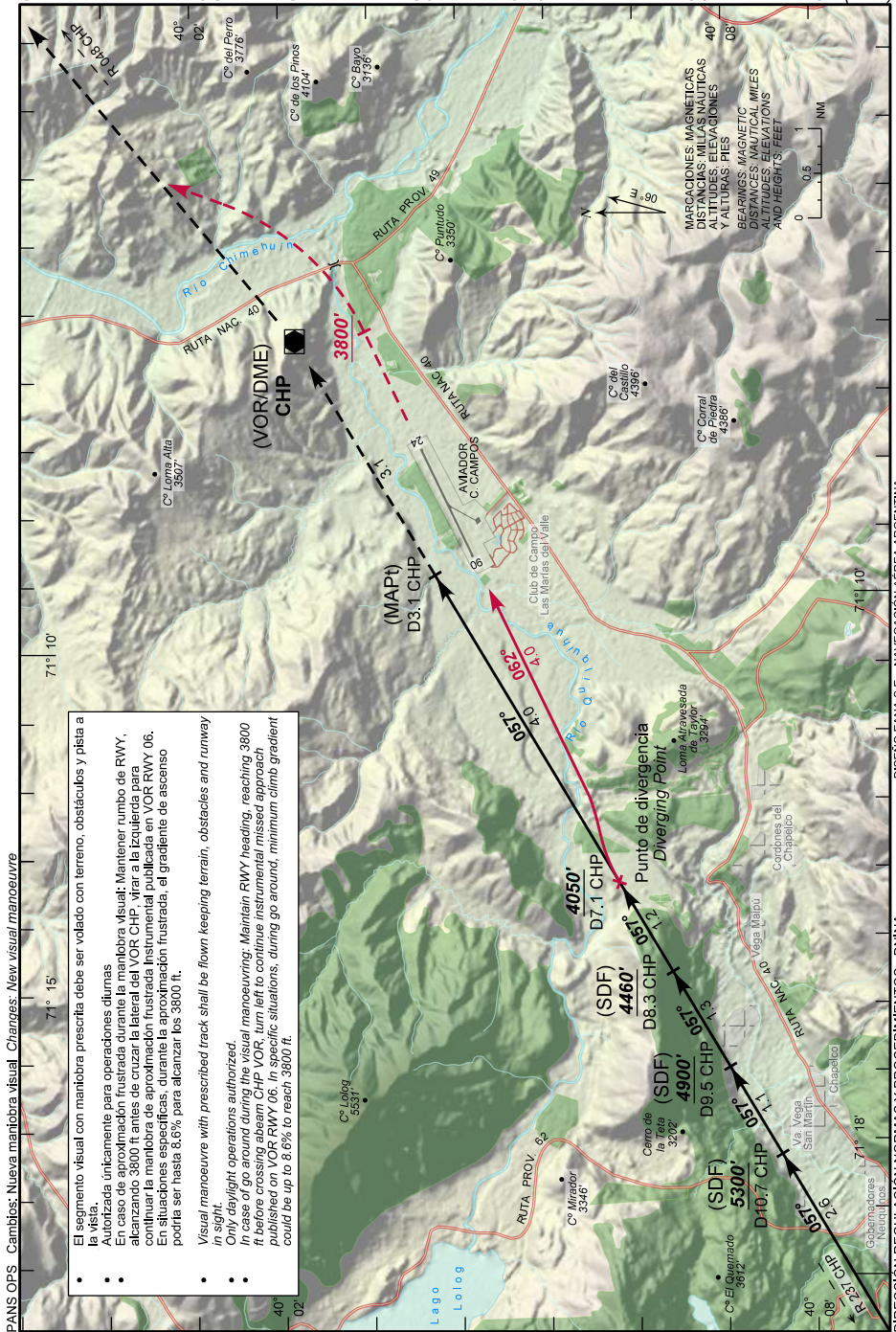


DIRECTA RWY 06 / Straight in RWY 06							Circulación Visual				
VOR/DME - VPT							Circle to land				
CAT	MDA 4050'					MDH	1461'				
VIS							CAT	MDA	MDH	VIS	
A	5000 M					A	Circulación Visual N.A. Circle to land N.A.				
B											
C											
D											
GS KT	90	110	130	150	160	DIST to CHP	13.2	12.0	10.0	8.0	7.1
FAF - MAPt 10.1 NM	6.47	5.33	4.41	4.04	3.49	ALT	6200	5770	5070	4370	4050
FPM	530	640	760	880	930	HGT	(3611)	(3181)	(2481)	(1781)	(1461)

10 AGOSTO 2023

**AVIADOR C. CAMPOS (SAZY)
SAN MARTÍN DE LOS ANDES**

**MANIOBRA VISUAL CON DERROTA PRESCRITA (VPT)
VISUAL MANOEUVRE WITH PRESCRIBED TRACK (VPT)**



PANS OPS Cambios: Nueva maniobra visual. *Changes: New visual manoeuvre*

- El segmento visual con maniobra prescrita debe ser volado con terreno, obstáculos y pista a la vista.
- Autorizada únicamente para operaciones diurnas.
- En caso de aproximación frustrada durante la maniobra visual: Mantener rumbo de RWY, alcanzando 3800 ft. antes de cruzar la lateral del VOR. CHP, virar a la izquierda para continuar la maniobra de aproximación frustrada instrumental publicada en VOR RWY 06. En situaciones específicas, durante la aproximación frustrada, el gradiente de ascenso podría ser hasta 8.6% para alcanzar los 3800 ft.
- Visual manoeuvre with prescribed track shall be flown keeping terrain, obstacles and runway in sight.
- Only daylight operations authorized.
- In case of go around during the visual manoeuvring: Maintain RWY heading, reaching 3800 ft. before crossing abeam CHP VOR, turn left to continue instrumental missed approach published on VOR RWY 06. In specific situations, during go around, minimum climb gradient could be up to 8.6% to reach 3800 ft.

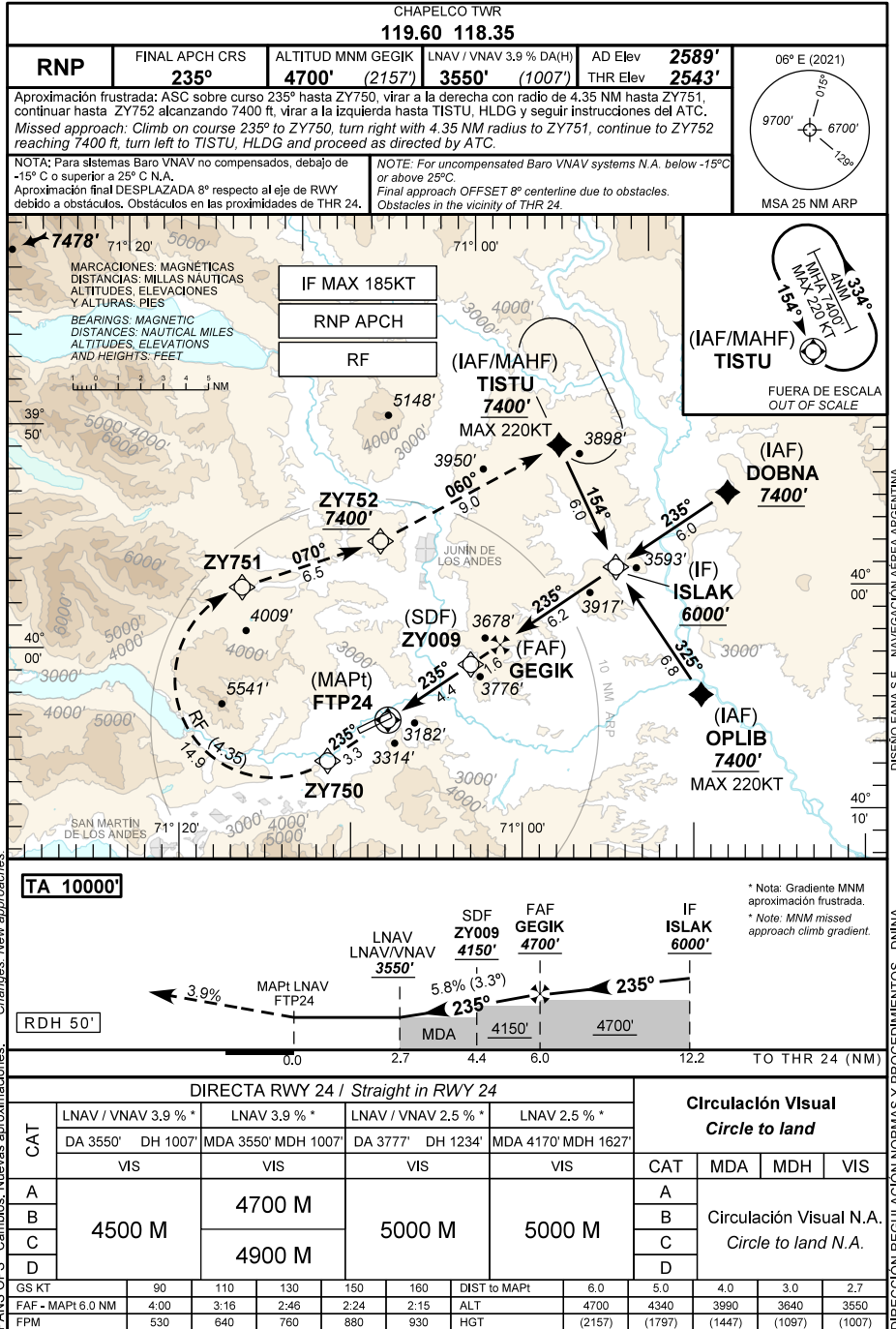
10 AGOSTO 2023

DISEÑO EANA S.E. - NAVEGACIÓN AEREA ARGENTINA

AVIADOR C. CAMPOS (SAZY)
SAN MARTÍN DE LOS ANDES

Carta de aproximación por instrumentos
Instrument approach chart

RNP X RWY 24



Changes: New approaches.
 PANS OPS Cambios: Nuevas aproximaciones.

DISEÑO EANA S.E. - NAVEGACION AEREA ARGENTINA
 DIRECCION REGULACION NORMAS Y PROCEDIMIENTOS - DNINA

1/2 AVIADOR C. CAMPOS (SAZY) RNP X RWY 24

Seq Num	Fix Ident	Coordinates	Path Terminator	Fly Over	Distance (NM)	Course M°(T°)	Turn	Alt / Descr (ft/FL)	Speed Limit (Kt)	Navigation Specification	RNP
10	OPLIB	S 40°04'16.07" W 070°49'06.47"	IF	N	N/A	N/A	N/A	+7400	-220	RNP APCH	1.0
20	ISLAK	S 39°58'19.93" W 070°53'32.18"	TF	N	6.8	325 (330.2)	N/A	+6000	-185	RNP APCH	1.0
10	DOBNA	S 39°55'21.50" W 070°46'45.53"	IF	N	N/A	N/A	N/A	+7400	N/A	RNP APCH	1.0
20	ISLAK	S 39°58'19.93" W 070°53'32.18"	TF	N	6.0	235 (240.3)	N/A	+6000	-185	RNP APCH	1.0
10	TISTU	S 39°52'43.20" W 070°56'18.58"	IF	N	N/A	N/A	N/A	+7400	-220	RNP APCH	1.0
20	ISLAK	S 39°58'19.93" W 070°53'32.18"	TF	N	6.0	154 (159.2)	N/A	+6000	-185	RNP APCH	1.0
10	ISLAK	S 39°58'19.93" W 070°53'32.18"	IF	N	N/A	N/A	N/A	+6000	-185	RNP APCH	1.0
20	GEGIK	S 40°01'24.40" W 071°00'32.49"	TF	N	6.2	235 (240.3)	N/A	+4700	N/A	RNP APCH	1.0
30	ZY009	S 40°02'11,25" W 071°02'18,86"	TF	N	1.6	235 (240.2)	N/A	+4150	N/A	RNP APCH	0.3
40	FTP24	S 40°04'23,76" W 071°07'20,29"	TF	Y	4.4	235 (240.3)	N/A	@2593	N/A	RNP APCH	0.3

10 AGOSTO 2023

2/2 AVIADOR C. CAMPOS (SAZY) RNP X RWY 24

Seq Num	Fix Ident	Coordinates	Path Terminator	Fly Over	Distance (NM)	Course M°(T°)	Turn	Alt / Descr (ft/FL)	Speed Limit (Kt)	Navigation Specification	RNP
50	ZY750	S 40°06'00.84" W 071°11'02.30"	TF	N	3.3	235 (240.4)	N/A	N/A	N/A	RNP APCH	1.0
60	ZY751	S 39°58'00.60" W 071°15'13.13"	RF	N	14.9	N/A	R	N/A	N/A	RNP APCH	1.0
70	ZY752	S 39°56'25.89" W 071°07'00.91"	TF	N	6.5	070 (075.9)	N/A	+7400	N/A	RNP APCH	1.0
80	TISTU	S 39°52'43.20" W 070°56'18.58"	TF	N	9.0	060 (065.7)	N/A	+7400	-220	RNP APCH	1.0
90	TISTU	S 39°52'43.20" W 070°56'18.58"	HM	Y	4.0	154 (159.2)	L	+7400	-220	RNP APCH	1.0

Centre ARC RF	Coordinates	Radius (NM)	From - To
ZY008	S 40°02'14,04" W 071°13'50,95"	4.35	ZY750-ZY751

10 AGOSTO 2023

1/2 AVIADOR C. CAMPOS (SAZY) RNP W RWY 24

Seq Num	Fix Ident	Coordinates	Path Terminator	Fly Over	Distance (NM)	Course M°(T°)	Turn	Alt / Descr (ft/FL)	Speed Limit (Kt)	Navigation Specification	RNP
10	TISTU	S 39°52'43.20" W 070°56'18.58"	IF	N	N/A	N/A	N/A	+7400	-220	RNP APCH	1.0
20	ISLAK	S 39°58'19.93" W 070°53'32.18"	TF	N	6.0	154 (159.2)	N/A	+6000	-185	RNP APCH	1.0
10	DOBNA	S 39°55'21.50" W 070°46'45.53"	IF	N	N/A	N/A	N/A	+7400	N/A	RNP APCH	1.0
20	ISLAK	S 39°58'19.93" W 070°53'32.18"	TF	N	6.0	235 (240.3)	N/A	+6000	-185	RNP APCH	1.0
10	OPLIB	S 40°04'16.07" W 070°49'06.47"	IF	N	N/A	N/A	N/A	+7400	-220	RNP APCH	1.0
20	ISLAK	S 39°58'19.93" W 070°53'32.18"	TF	N	6.8	325 (330.1)	N/A	+6000	-185	RNP APCH	1.0
10	ISLAK	S 39°58'19.93" W 070°53'32.18"	IF	N	N/A	N/A	N/A	+6000	-185	RNP APCH	1.0
20	GEGIK	S 40°01'24.40" W 071°00'32.49"	TF	N	6.2	235 (240.3)	N/A	+4700	N/A	RNP APCH	1.0
30	ZY009	S 40°02'11.25" W 071°02'18.86"	TF	N	1.6	235 (240.2)	N/A	+4150	N/A	RNP APCH	0.3

10 AGOSTO 2023

2/2 AVIADOR C. CAMPOS (SAZY) RNP W RWY 24

Seq Num	Fix Ident	Coordinates	Path Terminator	Fly Over	Distance (NM)	Course M°(T°)	Turn	Alt / Descr (ft/FL)	Speed Limit (Kt)	Navigation Specification	RNP
40	FTP24	S 40°04'23.76" W 071°07'20.29"	TF	Y	4.4	235 (240.2)	N/A	@2593	N/A	RNP APCH	0.3
50	ZY808	S 40°06'08.42" W 071°11'20.18"	CF	Y	3.5	235 (240.4)	N/A	N/A	N/A	RNP APCH	1.0
60	ZY809	S 40°04'42.56" W 071°19'39.68"	CF	N	6.5	297 (303.0)	N/A	N/A	N/A	RNP APCH	1.0
70	ZY810	S 39°58'41.25" W 071°15'23.57"	CF	N	6.9	062 (068.0)	N/A	N/A	-190	RNP APCH	1.0
80	TISTU	S 39°52'43.20" W 070°56'18.58"	TF	N	15.8	062 (068.0)	N/A	N/A	N/A	RNP APCH	1.0
90	TISTU	S 39°52'43.20" W 070°56'18.58"	HM	Y	4.0	154 (159.2)	L	+7400	-220	RNP APCH	1.0

10 AGOSTO 2023

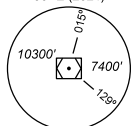
AVIADOR C. CAMPOS (SAZY)
SAN MARTÍN DE LOS ANDES

Carta de aproximación por instrumentos
Instrument approach chart

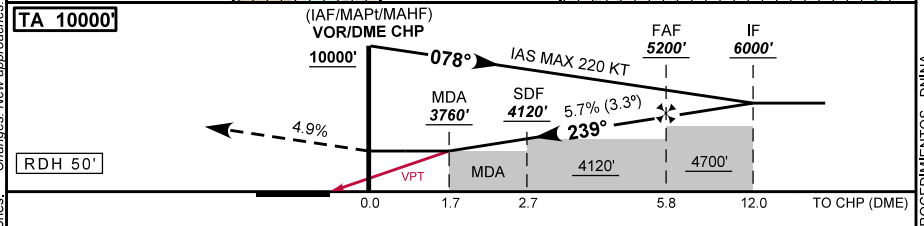
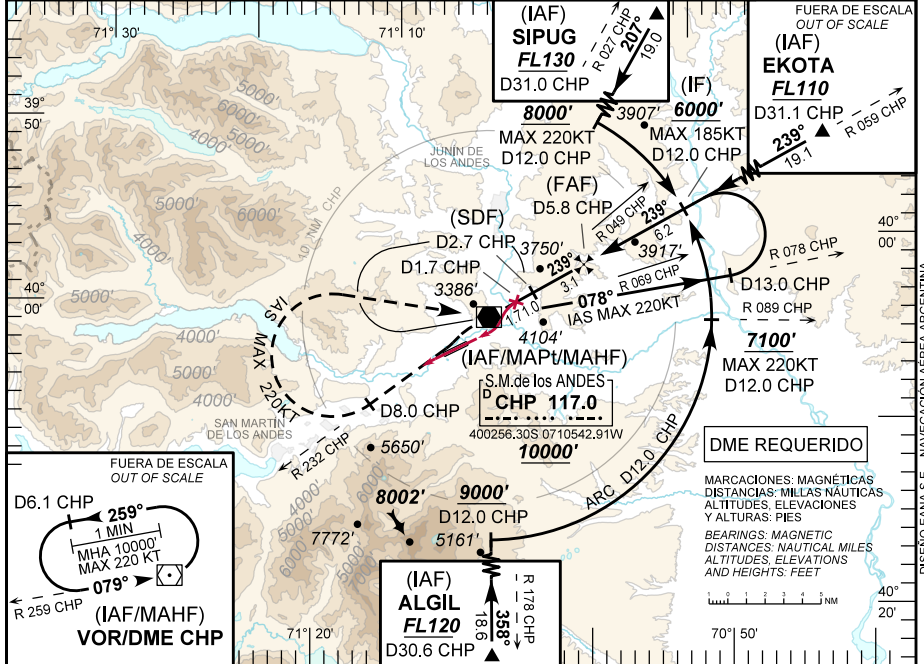
VOR RWY 24

CHAPELCO TWR					
119.60 118.35					
VOR CHP	FINAL APCH CRS	ALTITUD MNM FAF	VOR/DME MDA (H)	AD Elev	2589'
117.0	239°	5200' (2657')	3760' (1217')	THR Elev	2543'
Aproximación frustrada: ASC sobre R 232 CHP hasta D8.0 CHP, virar a la derecha DCT a VOR CHP alcanzando MNM 9300 ft, HLDG ascendiendo hasta 10000 ft y seguir instrucciones del ATC. Missed approach: Climb on R 232 CHP to D8.0 CHP, turn right DCT to CHP VOR reaching MNM 9300 ft, hold climbing to 10000 ft and proceed as directed by ATC.					
NOTA: Maniobra visual con derrota prescrita (VPT) ver siguiente página. Autorizada únicamente para operaciones diurnas. Obstáculos en las proximidades del THR 24, EKOTA FL110 u 11000 ft.			NOTE: Visual manoeuvre with prescribed track (VPT), see next page. Authorized only for daylight operations. Obstacles in the vicinity to THR 24, EKOTA FL110 or 11000 ft.		

06° E (2021)



MSA 25 NM CHP



DIRECTA RWY 24 / Straight in RWY 24											
CAT	VOR/DME - VPT				Circulación Visual						
	MDA 3760'		MDH 1217'		Circle to land						
	VIS				CAT	MDA	MDH	VIS			
A	5000 M				A	Circulación Visual N.A.	Circle to land N.A.				
B											
C											
D											
GS KT	90	110	130	150	160	DIST to CHP	5.8	5.0	4.0	3.0	1.7
FAF - MAP1 5.8 NM	3:54	3:11	2:42	2:20	2:11	ALT	5200	4900	4560	4210	3760
FPM	520	630	750	860	920	HGT	(2657)	(2357)	(2017)	(1667)	(1217)

10 AGOSTO 2023

**AVIADOR C. CAMPOS (SAZY)
SAN MARTÍN DE LOS ANDES**

**MANIOBRA VISUAL CON DERROTA PRESCRITA (VPT)
VISUAL MANOEUVRE WITH PRESCRIBED TRACK (VPT)**

